

Community Forum No. 8

December 06, 2018

Tewksbury Elementary Schools

Tewksbury, Massachusetts



PROJECT MANAGEMENT **CBRE|HEERY**
Massachusetts School Building Authority

Flansburgh Architects

Elementary School Building Committee

Dennis Francis	Chair, Elementary School Building Committee
Anne Marie Stronach	Vice Chair, School Committee
Christopher Malone	Superintendent of Schools, TPS
Brenda Theriault-Regan	Assistant Superintendent of Schools, TPS
Thomas L. Cooke	ESBC Member / Finance Committee
Christopher J. Modica	ESBC Member / Town Resident
Jonathan Ciampa	ESBC Member / Town Resident
Jay Harding	Principal, Trahan Elementary School
Richard Montuori	Town Manager
James Cutelis	ESBC Member / School Committee
Shannon M. Demos	ESBC Member
Maria McLaughlin	Building Committee Project Administrator
Jacquelyn Mailey	School Teacher
Eric Ryder	Community Member

Design Team

Kent Kovacs	Flansburgh Architects
Bill Beatrice	Flansburgh Architects
Betsy Farrell Garcia	Flansburgh Architects

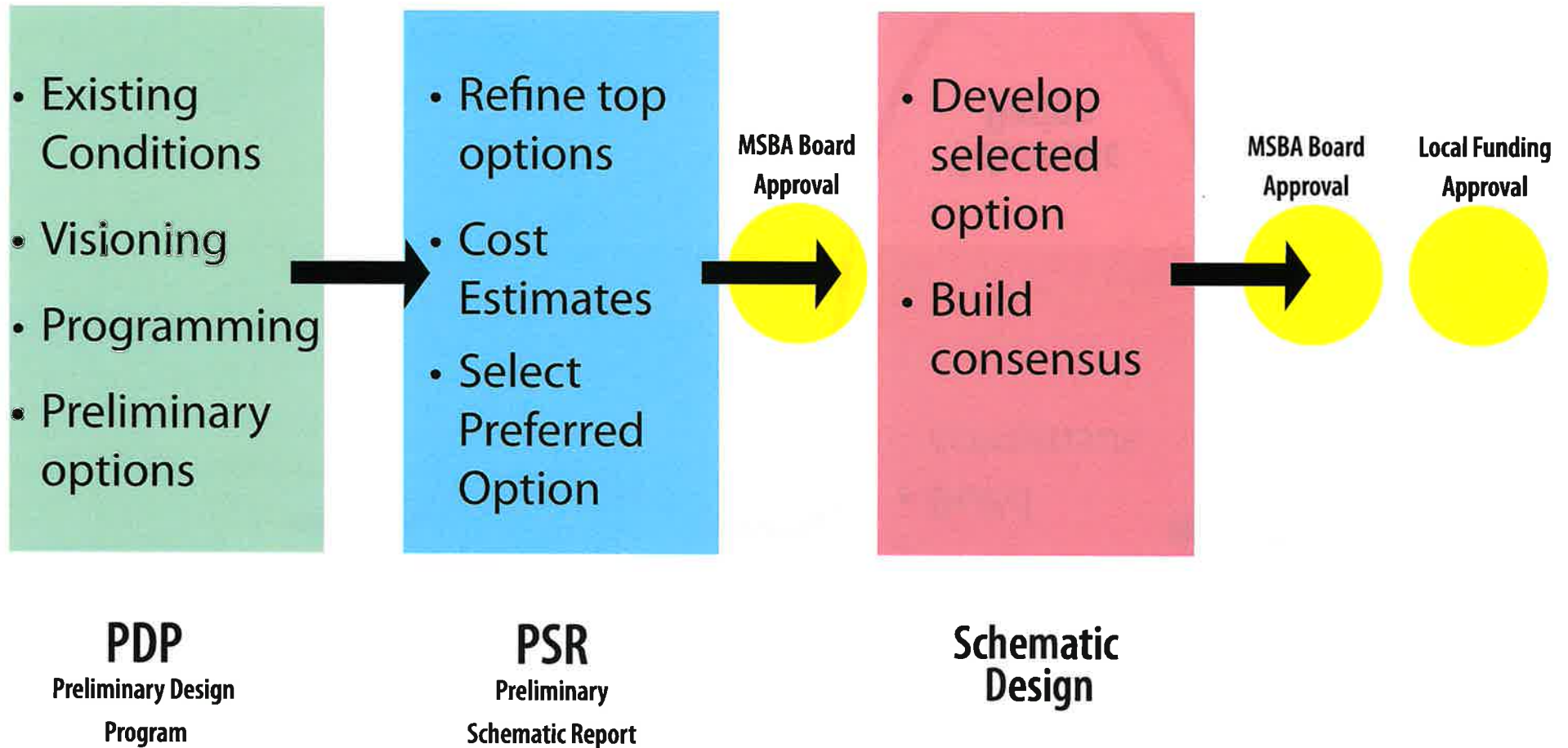
Owner's Project Manager

Peter Collins	CBRE HEERY Project Management
---------------	---------------------------------

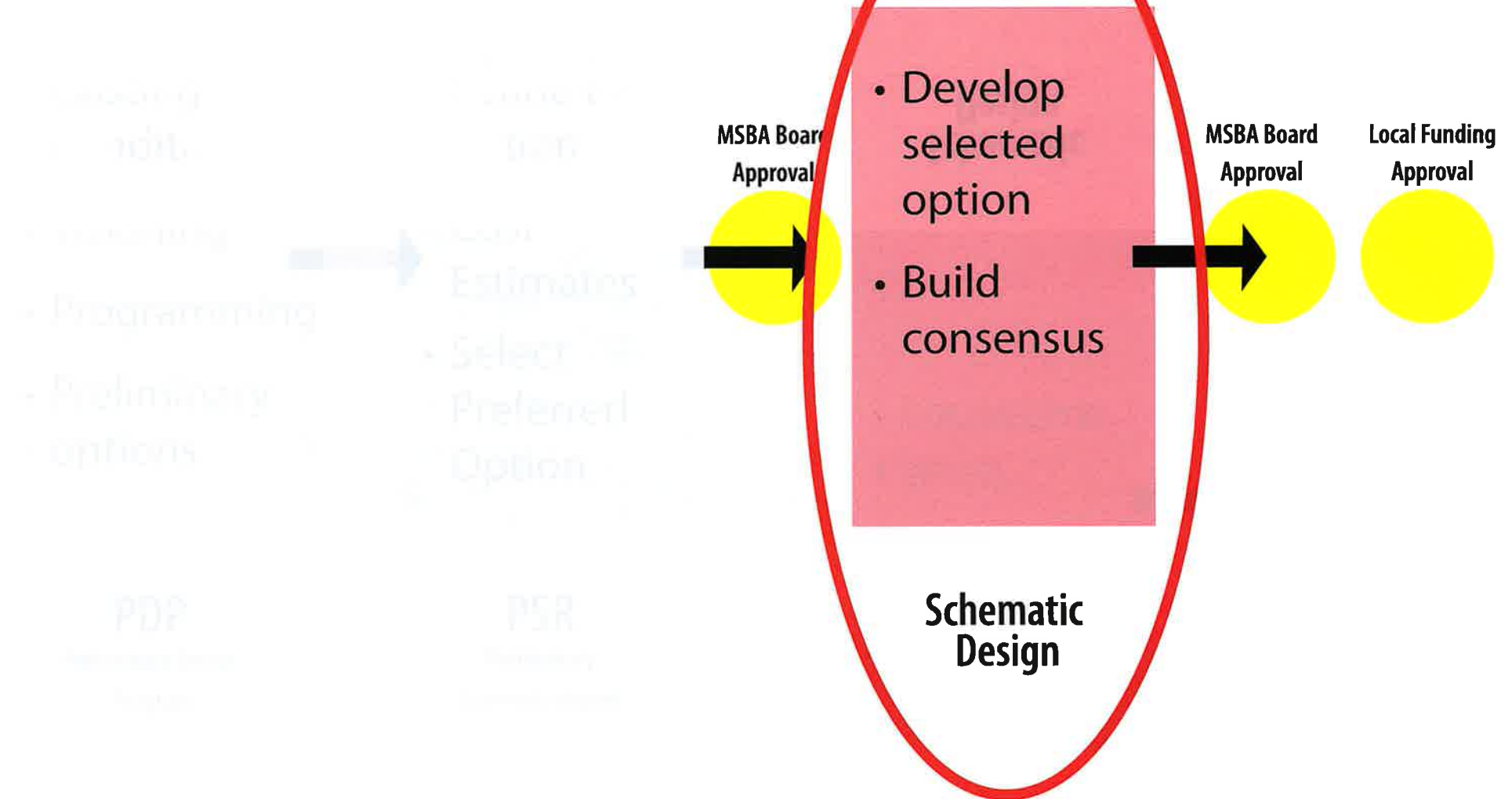
MSBA Process

- **MSBA** is an independent public authority that administers and funds a program for grants to eligible cities, towns, and regional school districts for school construction and renovation projects.
- **MSBA** mandates a multi-step rigorous study and approval process.
- Current grant funding agreement with MSBA is **52.06%**. Project has potential for increased reimbursement for an approved project if accepted by the voters of Tewksbury.

MSBA Process



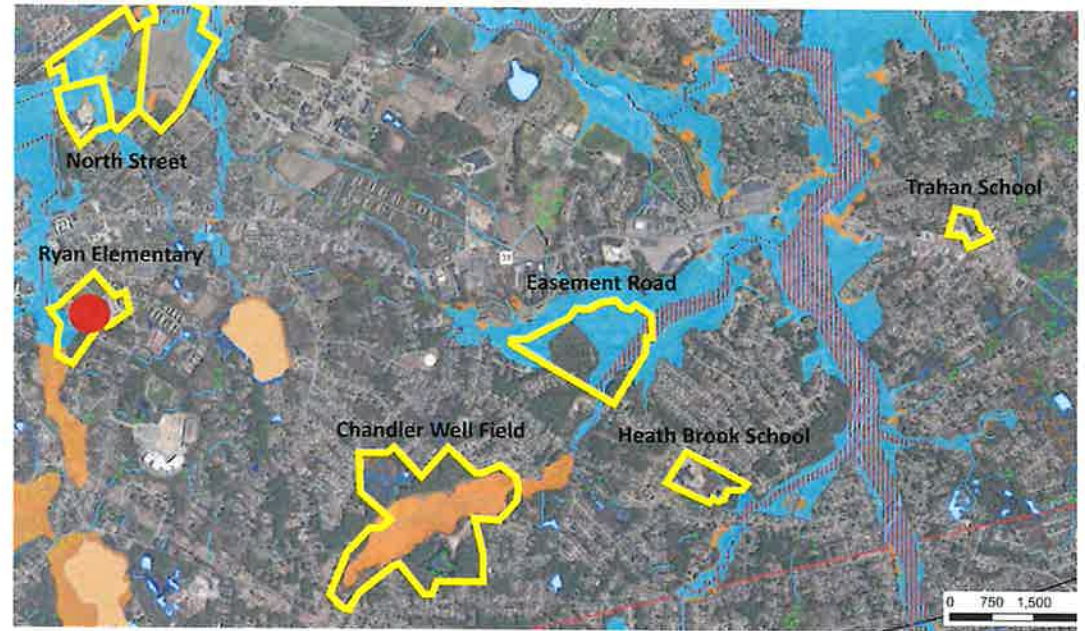
MSBA Process



Site Selection

The study began with the evaluation of six sites considered for the project. Geographic location, buildable area, natural features, disruption to student/staff during construction were some of the factors discussed.

The Ryan Elementary School site was selected for its close proximity to the town center, opportunity for enhanced resources as part of an academic campus with the Ryan School, and available open building area.





KEY PLAN

- 1 - NEW SCHOOL
- 2 - ENTRY PLAZA
- 3 - PLAY STRUCTURES
- 4 - OPEN PLAY FIELDS
- 5 - PARKING
- 6 - PARENT DROP OFF
- 7 - BUS DROP OFF
- 8 - EXISTING RYAN SCHOOL
- 9 - RELOCATED SPORTS FIELD
- 10 - NEW PRACTICE FIELD
- 11 - VISITOR SEAT WALLS
- 12 - HOME BLEACHERS

SITE FEATURES

- A. LANDSCAPED CORNER INCLUDES ADDITIONAL TREES AND GUARD RAIL AS A SAFETY BUFFER.
- B. SITE PERIMETER INCLUDES 15'-0" OF LANDSCAPED AREA AND 6'-0" FENCE TO SCREEN SITE
- C. LOOP ROAD PROVIDES EMERGENCY ACCESS TO ALL AREAS OF SITE AND ACCOMMODATES PARENT DROP OFF ON SITE TO EASE CONGESTION ALONG PLEASANT STREET
- D. EMERGENCY ACCESS TO MUNRO CIRCLE, GATED CONTROLLED BY POLICE AND FIRE ONLY.
- E. DENSE LANDSCAPED BUFFER AT NORTH EAST CORNER OF SITE

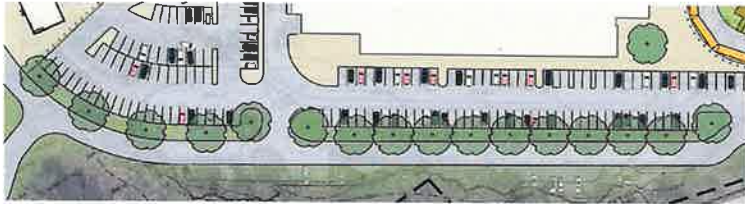
A B C D **MUNRO CIRCLE**

Overall 40' x 40' Dimension = 2' x 2' sidewalk + 34' x 34' driveway + 15' foot green buffer

School
PLEASANT STREET

CONCRETE ROAD





1) PARKING LOTS

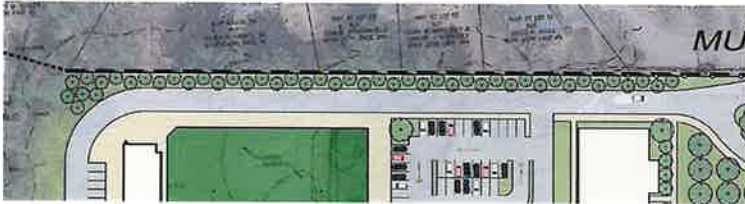


RED
MAPLE



RED
MAPLE
(FALL)

SELECTED PLANTS



2) SCREENING PLANTING



ARBORVITAE



HOLLY



WHITE PINE



WITCH HAZEL



WITCH HAZEL
(SPRING)



AMELANCHIER
(SPRING)



AMELANCHIER
(FALL)

SELECTED PLANTS



3) MIXED CANOPY



RED
MAPLE



RED
MAPLE
(FALL)



SCARLET OAK



SCARLET OAK
(FALL)



BIRCH



BIRCH
(FALL)

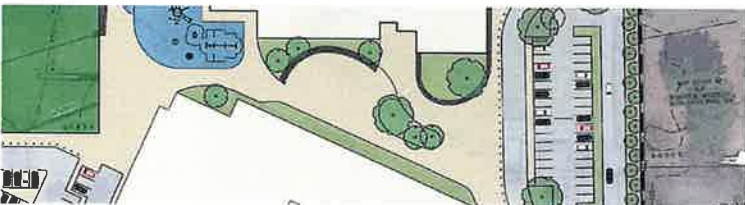


AMELANCHIER
(FALL)



WITCH HAZEL
(SPRING)

SELECTED PLANTS



4) PLAZA PLANTERS



WITCH HAZEL
(SPRING)



AMELANCHIER
(SPRING)



INKBERRY



WINTER BERRY



WINTER BERRY
(WINTER)



TUFTED HAIRGRASS



BLACK EYED
SUSAN



SEDUMS

SELECTED PLANTS



5) RAIN GARDENS



SEDGES



ANDROPOGON

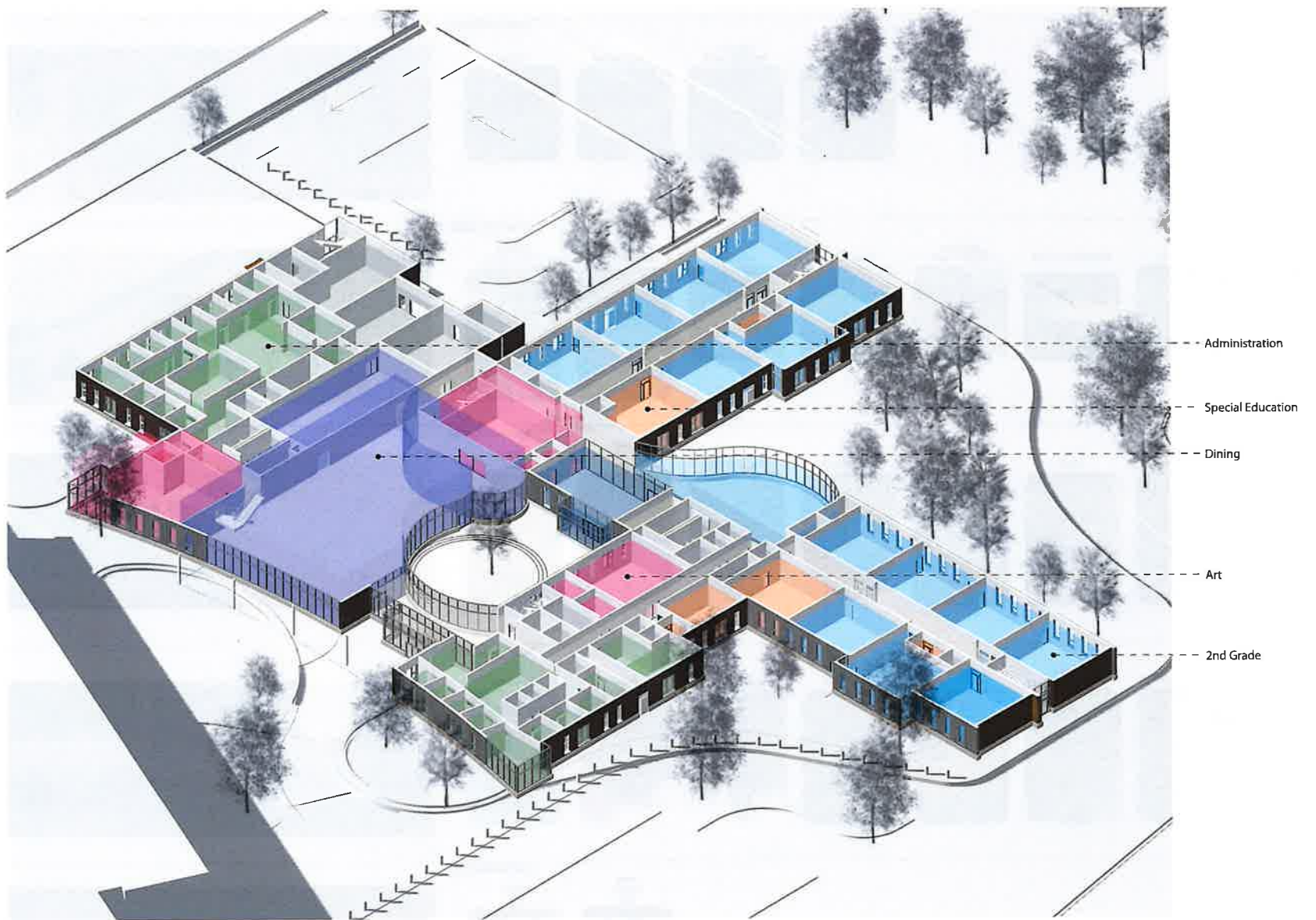


BLUE CARDINAL
FLOWER



BLACK EYED
SUSAN

SELECTED PLANTS

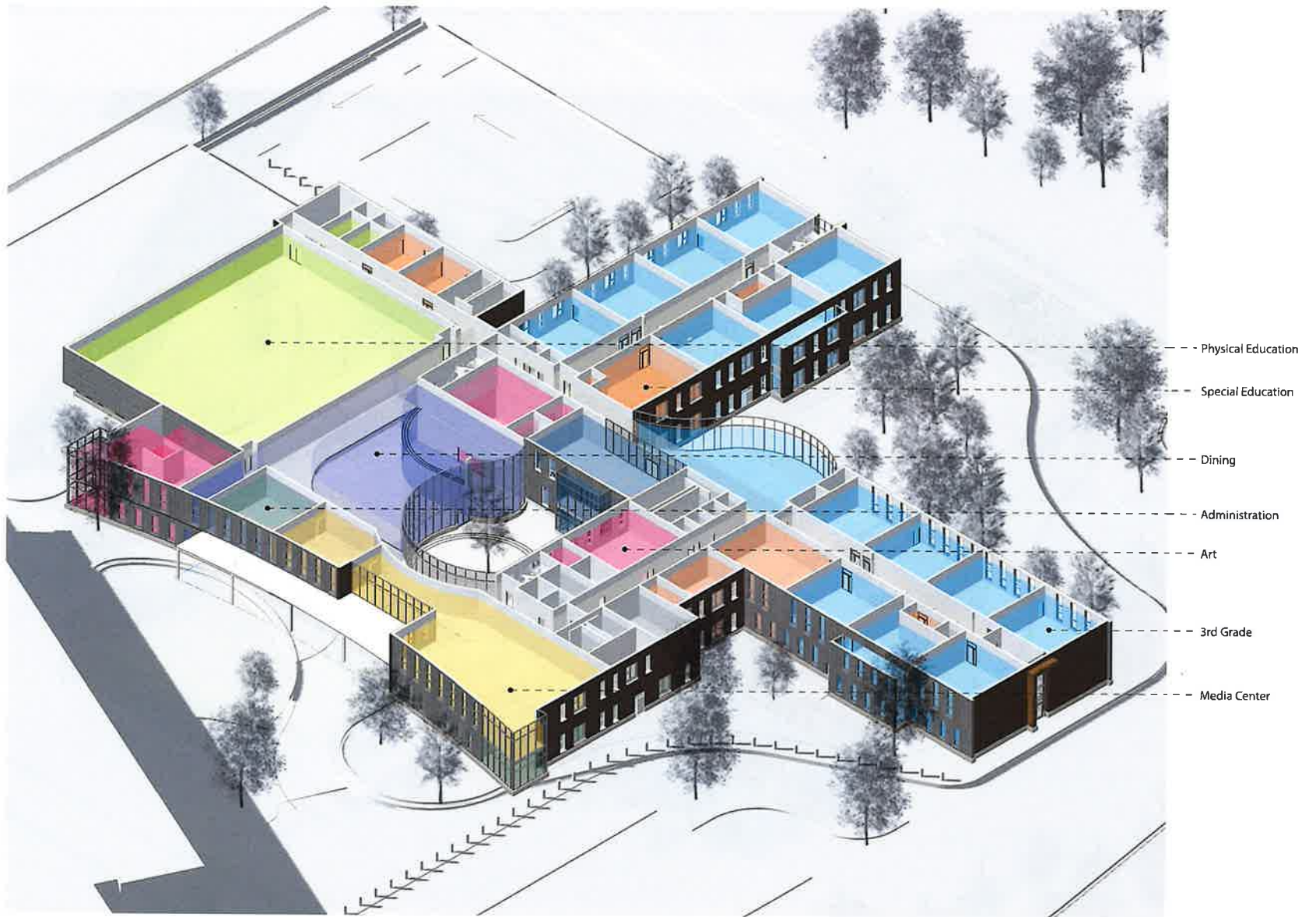


FIRST FLOOR ISOMETRIC

Tewksbury Elementary School Building Project
Tewksbury, MA

FLANSBURGH

December 6, 2018

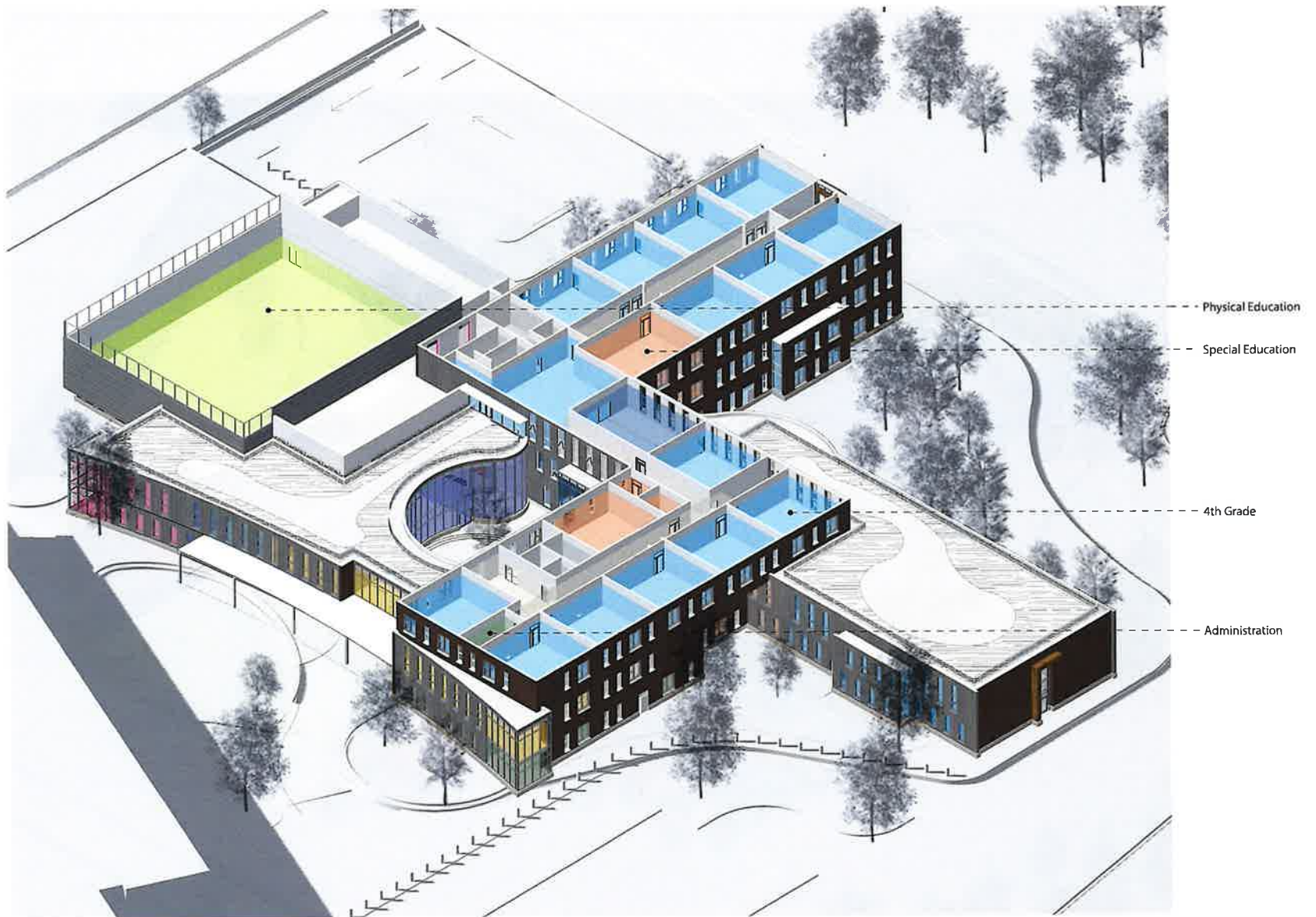


SECOND FLOOR ISOMETRIC

Tewksbury Elementary School Building Project
Tewksbury, MA

FLANSBURGH

December 6, 2018

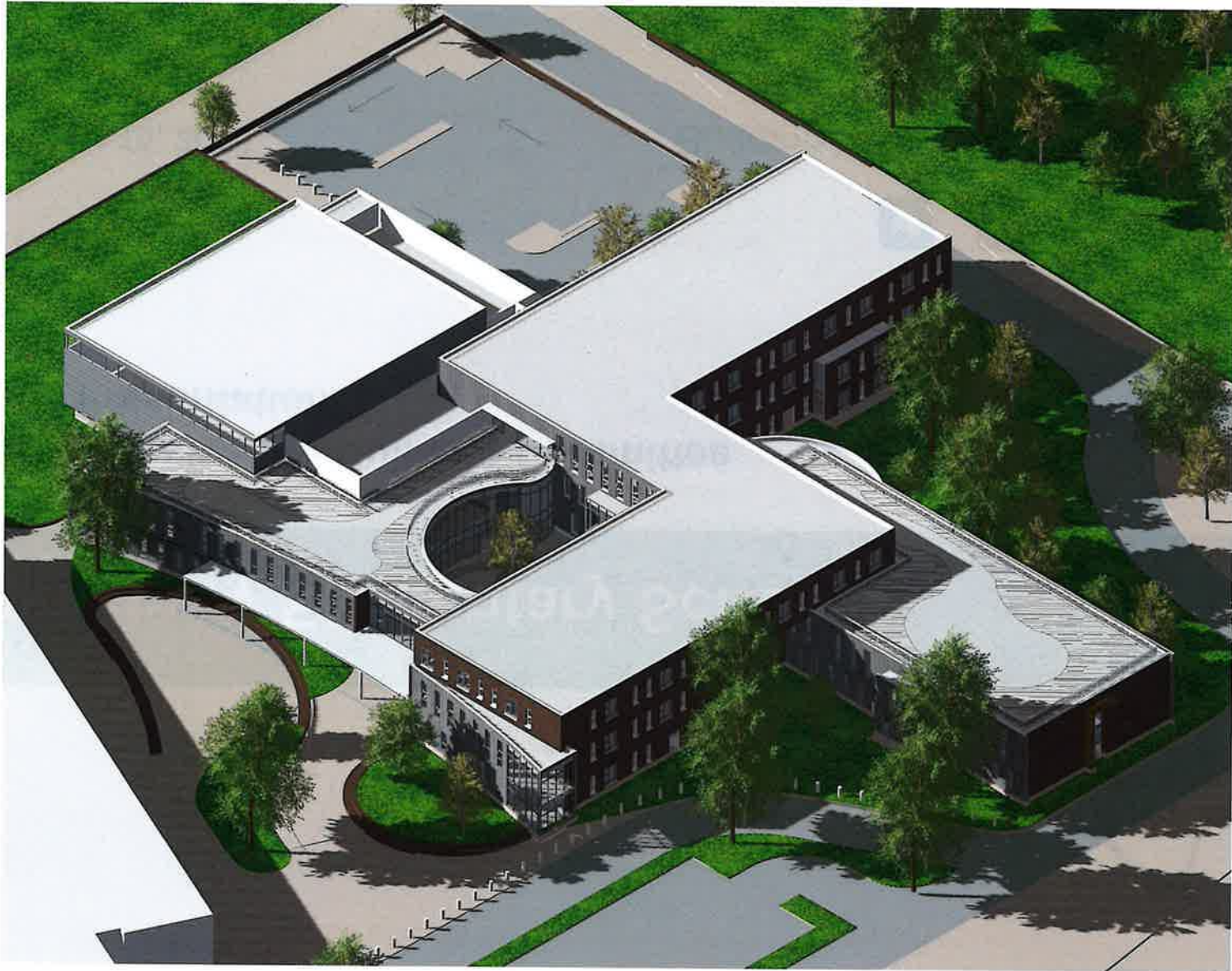


THIRD FLOOR ISOMETRIC

Tewksbury Elementary School Building Project
Tewksbury, MA

FLANSBURGH

December 6, 2018

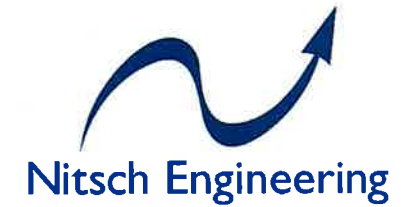


OVERALL BUILDING ISOMETRIC

Tewksbury Elementary School Building Project
Tewksbury, MA

FLANSBURGH

December 6, 2018



Tewksbury Elementary School

**Town of Tewksbury Building Committee
Traffic Presentation**



@nitscheng

November 15, 2018

Building better communities with you

Tewksbury Elementary School

Traffic Study for the Tewksbury Elementary School

- Introduction: Locus, Traffic Data, Level of Service
- Existing Traffic Conditions at Ryan School Site
- Proposed Conditions with New Grade 2-4

Elementary School at the Existing Ryan School Site

- Recommendations
- Questions

New School Program

- Student Projections for New School
 - Grades 2-4: **790 (Release time 3:10 PM)**
 - Existing Grades 5-6: **576 (Release time 2:30 PM)**
 - Staff (teachers, support, administration): **150**
 - Total: **1516**
- Projected Drop-off and Pick-up
 - Drop-off: **409**
 - Pick-up: **209**
 - Buses: **16 + 4 Mini-buses**



Traffic Level Of Service

LEVEL OF SERVICE (LOS)

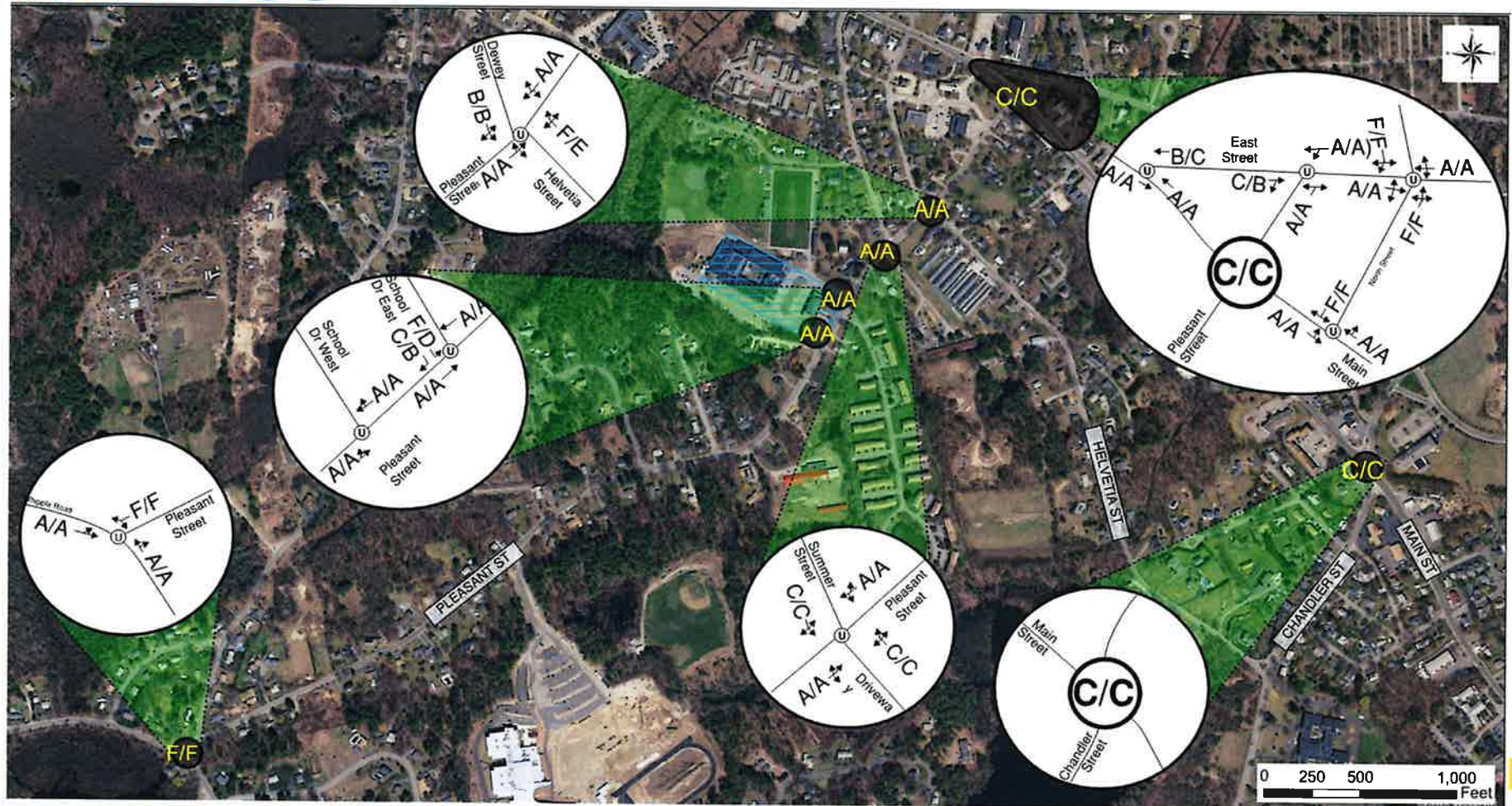
-  LOS "A" Delay 0-10 Seconds
-  LOS "B" Delay 10-20 Seconds
-  LOS "C" Delay 20-35 Seconds
-  LOS "D" Delay 35-55 Seconds
-  LOS "E" Delay 55-80 Seconds
-  LOS "F" Delay >80 Seconds



LOS AM/PM Peak - Existing



Build LOS



Recommended Mitigation

- Continue designating Pleasant Street as a School Zone under State and local statute, and install the appropriate School Zone signs.
- Enhance pedestrian experience along Pleasant Street by considering improvements to the sidewalks and accessible ramps where needed to accommodate children walking to school and Safe Route to School;
- Provide advanced warning signs for school entering and exiting traffic.
- Reach out to parents via social media to increase safety awareness.



T-1.0