

ELE Celebratory News



A belated Happy Lunar New Year to our students from: Vietnam, Thailand, Malaysia, China, and Cambodia.

Check Us Out!



Twitter:

@TPTELE

SEI SMART CARD Reference



Instructional Design and Delivery

“Academic concepts are linked to students’ prior knowledge.”

Lessons use what students know from home, community, school, etc. as a bridge to learning new concepts.

Coaches’ Corner



Shared by: TPS’ Tech Coaches

This video is about an awesome way to use Google’s translate app with a phone or tablet.

<https://www.youtube.com/watch?v=0zKU7jDA2nc>

Shared by: TPS’ Math Coaches *Mathematics and ELs*

https://steinhardt.nyu.edu/scmsAdmin/uploads/004/738/NYU_PTE_Math_Module_For_ELLS_Oct_8_2009.pdf

Did You Know?



In many cultures, parents are NOT encouraged to help their children with homework. In fact, some families believe that any questioning of or interference with the school is disrespectful.

Tech tip:



Students can use apps like Vocaroo to record and save audio. This is a great tool to use when assessing what ***content our students understand***. (Obviously, with teacher assistance for younger kiddos).

Google has **Voice Typing!** When using Google Docs, students can utilize voice typing. The microphone can be found under the tools tab or by pressing command + shift + s. The possibilities are endless for our students who can *tell us what they know* but do not have a handle on the writing yet.

ELE Department Updates to: Principals' • February 2019
ELE Staff: Karen Hodgson, Kathy Henry, Kate Lamoureux, Jennifer Espailat, Jessica Bridle



ELE Highlights



2018 - 2019 ACCESS testing is complete for all schools; check w/your EL staff if you have any thoughts or questions.

A very big and sincere thank you for the administrative support! We will share the results in May.

ELE MCAS 2018 - 2019

Allowable Accommodations: ELE Staff has submitted the EL recommendations for MCAS. Any DESE approved word-to-word dictionary will be supplied by the ELE Dept.



Recent/Ongoing Collaborative Areas

- Participant:
TAT - SST IEP Meeting MTSS/WIN/**TeamTime**
- ELE Coaching:
Can-Dos **UDL** *Language Objectives* **Grades**
Extra Help *Social/Emotional* **New EL student**
SEI strategies *Home-School Connection*
- Extra Curricular Guidance • MCAS Support
- **Classroom Observation** • **TPS' Student Services**
- School Nurse • **Translation Guidance**
- Guidance Dept. (Wynn & TMHS) • Discovery
- Other:



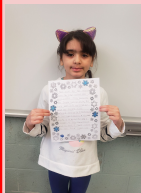
Dewing and Trahan School Highlights

Hi Terry and Jay,

Please enjoy the first issue of the ELE Department update! This box will contain **Dewing and Trahan** updates/information only. The other blocks pertain to the entire TPS ELE Department.

The highlights to your left are areas I have been working on recently and may change from month to month.

The Dewing School is incredibly lucky to have a new 2nd grader join the ELE Program. She recently moved to Tewksbury from Brazil with her parents and older brother and she had her first experience seeing snow for the very first time!! During some of our time together she wrote about what it was like to see and touch snow for the first time!



Jen

This is our new student sharing her awesome writing!

As always please feel free to reach out with any questions or concerns and thank you both for your continued support!

ELE Department Updates to: Principals' • March 2019

ELE Staff: Karen Hodgson, Kathy Henry, Kate Lamoureux, Jennifer Espaillat, Jessica Bridle



ELE Highlights

We are in the middle of “Conference Season”. Please be sure to request your interpreters at least 10 business days before the scheduled conference.

If EL (or FEL) students are using DESE approved glossaries or word-to-word dictionaries on the MCAS, they should be practicing with them in their content area classes before MCAS. ELE dept. distributed the glossary/w2w last month.

Thanks to Cummings Properties’ Giving Program, our Annual **ELE Field Trip will be on June 10th.**

We are excited to explore all our community has to offer!



Recent/Ongoing Collaborative Areas

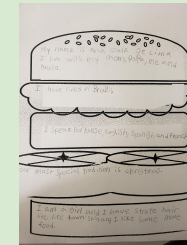
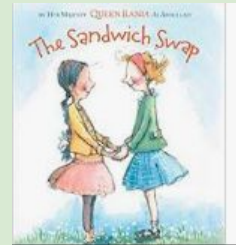
- Participant:
TAT - SST IEP Meeting **MTSS/WIN/TeamTime**
- ELE Coaching:
Can-Dos **UDL** **Language Objectives** Grades
Extra Help **Social/Emotional** New EL student
SEI strategies **Home-School Connection**
- Extra Curricular Guidance ● MCAS Support
- **Classroom Observation** ● TPS’ Student Services
- **School Nurse** ● Translation Guidance
- Guidance Dept. (Wynn & TMHS) ● Discovery
- Other:



Dewing School Highlights

Our students have been working incredibly hard this month! At the Dewing we spent some time working on diversity across all of the grade levels using the mentor text, *The Sandwich Swap*. The students really enjoyed celebrating their differences and learning more about their peers as well as making our own diversity sandwiches! We also used our essential question to help guide our learning and as our culminating writing activity. As always, please feel to reach out with any questions or concerns you may have!

Jen



ELE Celebratory News



Happy Holi! (March 21, 2019) to all our students, staff, and families celebrating!
FIVE (and counting!) senior ELs or FELs have been accepted to the colleges of their choice!!!

Check Us Out!



Twitter:

@TPTELE

SEI SMART CARD Reference



Organization of the Classroom

Learning Objectives are content driven and are presented to students at the beginning of the lesson and revisited as part of lesson closure. However, Language Objectives are the **how** of the lesson and articulate what students will be doing within the lesson in terms of R,W,S,L. We hope you are enjoying reading the LANGUAGE OBJECTIVES in the classrooms you visit.

Coaches' Corner



Shared by: TPS' Tech Coaches

Virtual reality, such as Google Expeditions, helps you to enhance and enrich your regular curriculum for your class. Imagine what it could do for your ELs as well! What if you allow your EL to lead a tour through his/her country in order to introduce it to his/her peers? If your EL is hesitant to show the entire class, how about a small group of peers or just you?

Shared by: TPS' Math Coaches

Mathematics and ELs



Did You Know?

It's no secret that ELLs in the US is booming. By 2025, nearly one out of every four public school students is expected to be an English learner. And ELL populations are soaring in place where they were historically lower- Southern states like NC, VA, & GA. I personally think Tewksbury needs to be added to this list, with pride!

Source: FAST FORWARD by Scientific learning.



Tech Tips:

Have you heard of Epic!?? Epic! [Epic! - Read Amazing Children's Books](#) is free to teachers and full of audio books, including bilingual books. This can help promote bilingualism/literacy in the two languages.

Read & Write is a game changer for ELs and reluctant readers and writers. <https://youtu.be/F2oV7WVLHlc>